



△ SPECIFICATION OF DIAPHRAGM

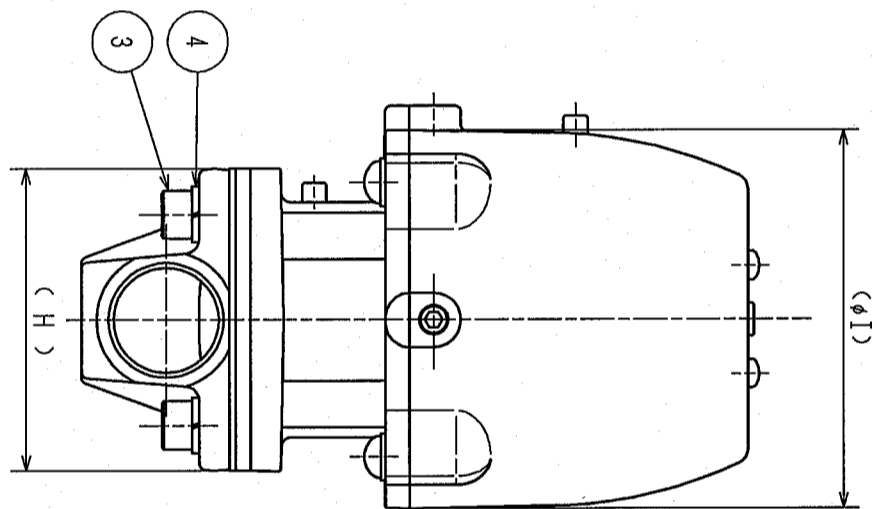
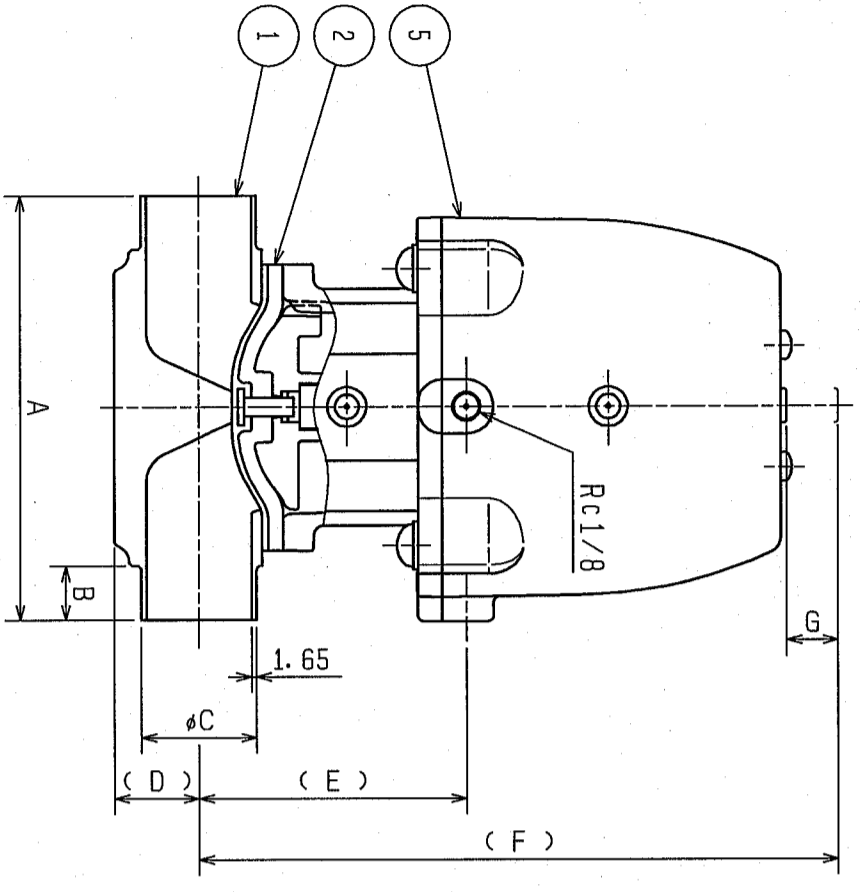
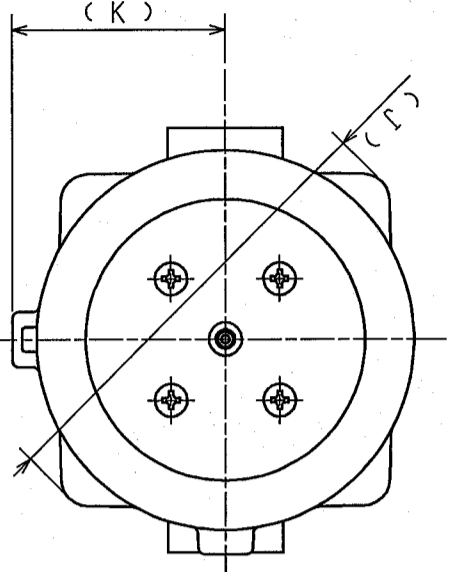
TEMPERATURE 0~150°C  
 MAX. PRESSURE 0.49MPa  
 (NOTE 1) IN THE CASE OF HIGH-TEMPERATURE FLUID  
 (MORE THAN 100°C), PLEASE USE AT LESS THAN 0.4MPa.  
 (NOTE 3) IF USING CONTINUOUSLY WITH STEAM,  
 USE A HEAT RESISTANT DIAPHRAGM (PTFE/FKM).

Remove the body from the valve  
 before welding to prevent the  
 thermal effect on the diaphragm.

△ SPECIFICATION OF ACTUATOR

TYPE NORMALLY CLOSED  
 OPERATING PRESSURE 0.4~0.7MPa  
 (NOTE 3) PLEASE USE OPERATION AIR WITH NO DRAIN.  
 SPEED FOR OPEN/CLOSE 3/4", 1", 1.5", 2", 2.5", 3", 4", 5", 6", 8", 10", 12", 15", 20", 25", 32", 40", 50", 65", 80", 90", 100", 125", 150", 200", 250"  
 1 1/2", 2", 2.5", 3", 4", 5", 6", 8", 10", 12", 15", 20", 25", 32", 40", 50", 65", 80", 90", 100", 125", 150", 200", 250"  
 TEMPERATURE 0~130°C

SPECIFICATION OF BODY POLISHING  
 INTERIOR:MECHANICAL POLISH AND ELECTROPOLISH  
 EXTERIOR:ELECTROPOLISH (SURFACE REMAIN FORGED)



SIZE	A	B	C	D	E	F	G	H	I	J	K	ITEM NO.
3/4	102	25	19.05	14	68	142	7	52	83	100	50.5	BWC2N-A1-5EUS
1	114	20	25.4	19	83	192	10	75	109	133	63	BWC2N-A1-5FUS
1 1/2	140	18	38.1	28	89	211	17	100	125	147	70.5	BWC2N-A1-5HUS
2	159	20	50.8	36	101	269	26	120	141	167	78	BWC2N-A1-5IUS

CAREER	CONTRAST TABLE	NOMINAL SIZE (A)																UNIT (mm)	THE THIRD ANGLE
		6	8	10	15	20	25	32	40	50	65	80	90	100	125	150	200		
		1/8	1/4	3/8	1/2	3/4	1	1 1/4	1 1/2	2	2 1/2	3	3 1/2	4	5	6	8	10	
		10.5	13.8	17.3	21.3	25.4	30.5	35.7	41.1	47.6	54.3	61.1	68.1	75.3	82.6	90.1	97.6	105.2	

REVISION

REV. NO.	DATE	REVISED DESCRIPTION	REVISED	APPD.
1	07.7.9	Revision		

REMARK

1. DIMENSIONS IN PARENTHESES IS FOR REFERENCE.  
 2. THIS DRAWING SHOWS ONLY OUTSIDE DIMENSIONS.  
 3. AS TO INSIDE STRUCTURE AND PARTS LIST.  
 PLEASE REFER TO ATTACHED DRAWING.  
 DRG. NO. U195543E

PART. NO.	NAME OF PARTS	MATERIAL	QTY	REMARK
15	ACTUATOR	ADC12	1	PIPE COATED
4	WASHER	SUS304	4	
3	CAP BOLT	SUS304	4	
2	DIAPHRAGM	PTFE/BUTYL	1	
1	BODY	SUSF316L	1	

MATERIAL LIST

DATE	SCALE	TEST PRESS.	MPa
06.5.23	FREE	HYDRO	GN2
	APPD.	SHELL	0.62
	CHKD.	SEAT	0.54
	DESIGN	BACKSEAT	0.62
	DESIGN	SEAL	0.62

MODEL NO.	TRADEMARK OR MODEL NAME	NAME	DRG. NO.	REV. MARK
		STAINLESS STEEL BW TYPE AIR OPERATE DIAPHRAGM VALVE	U196027E	1

Fujikin Incorporated  
 株式会社 フジキン

170	BWC	2	CAB. NO.
ASBWC33			