

**Piping Suggestions**

1. In the piping, the tubes should be fixed onto a vibration-free structure such as a wall, a column with brackets, etc., with the support screws (M5) provided on the side surface of the actuator.
2. Over-tightening the screws may place strain on the valve and interfere with its performance. Position the valve as close as possible to the supporting structure before securing with the screws, and do not over-tighten the screws to force the valve in place.
3. The valve must be installed with the actuator up.

# SAMPLE

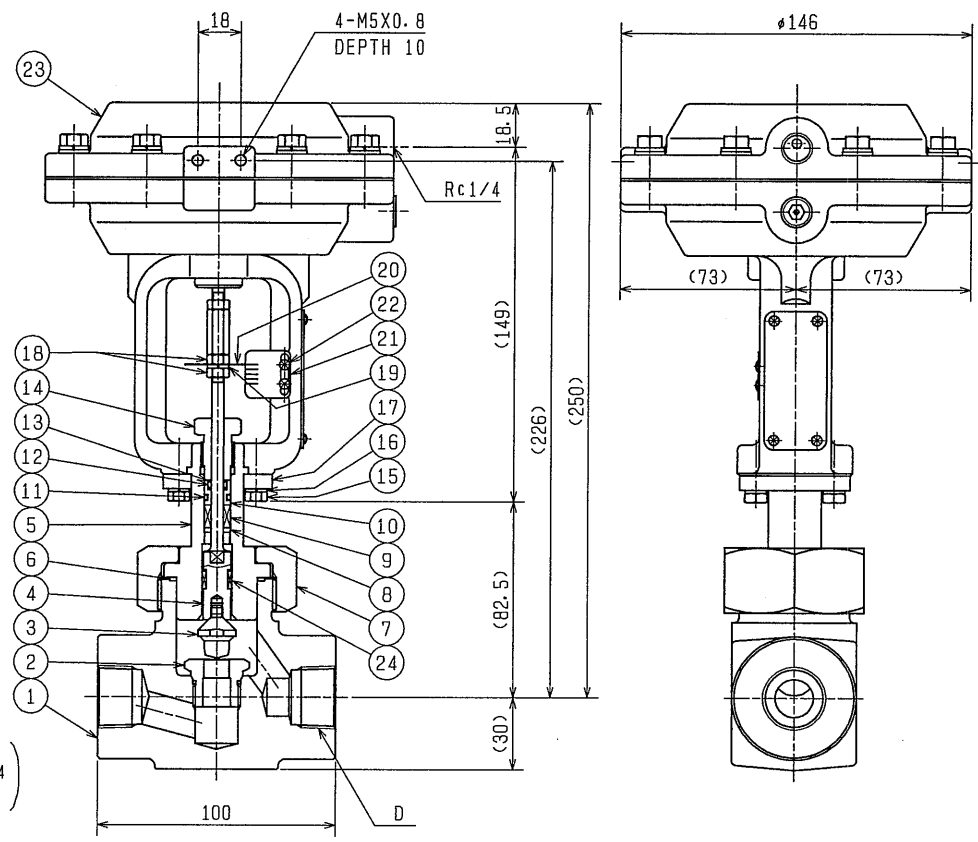
**NOTE**

1. \*1 Indicates Operating pressure number.
2. \*2 Indicates Cv value number.
3. Test pressure and allowable seat leakage volume is specified on each occasion, because it varies according to the specifications.  
(Allowable seat leakage volume  
Control valve : Ratio against rated Cv value  $1 \times 10^{-4}$   
ON-OFF valve : Ratio against rated Cv value  $5 \times 10^{-7}$ )
4. Material marking on body is 316.

23	ACTUATOR	—	1SET	20	INDICATOR	SUS304	1
24	GUIDE	Cu-PTFE	1	21	LIFT SCALE	SUS304	1
				22	CROSS RECESSED HEAD SCREWS	SUS304	2

REVISION				
REV. NO.	DATE	REVISED DESCRIPTION	REVISED	APPD.

REMARK



19	SPRING WASHER	SUS304	1	
18	HEX. NUT	SUS304	2	
17	ACTUATOR PLATE	SUS304	2	
16	SPRING WASHER	SUS304	4	
15	HEX. BOLT	SUS304	4	
14	GLAND NUT	SUS304	1	
13	BACK UP RING	PTFE	1	
12	O RING	FKM	1	
11	O RING	FKM	1	
10	O RING HOLDER	SUS316	1	
9	GLAND PACKING	PTFE	1SET	
8	PACKING SHEET	SUS316	1	
7	BONNET NUT	SUS304	1	
6	GASKET	SUS316	1	
5	BONNET	SUS316	1	
4	STEM	SUS316	1	
3	DISK	SUS316	1	STELLITE No. 12
2	SEAT	SUS316	1	STELLITE No. 6
1	BODY	SUS316	1	

PART. NO.	NAME OF PARTS	MATERIAL	Q'TY	REMARK
-----------	---------------	----------	------	--------

MATERIAL LIST				
DATE	8.5.08	TEST PRESS.		
SCALE	FREE	ITEM	FLUID	
APPD.	<i>K. Demizu</i>	SHELL		
CHKD.	<i>m. Sugawara</i>	SEAT		
DESIGN	<i>A. Nishikawa</i>	BACKSEAT		
		SEAL		

RECIPIENT

MODEL NO.

TRADEMARK OR MODEL NAME

MINUCON®

NAME

STAINLESS STEEL DIRECT ACTION TYPE MINI CONTROL VALVES

ORG. NO.

UM197044E

REV. MARK

0

Fujikin Incorporated  
株式会社 フジキン

UNIT: mm

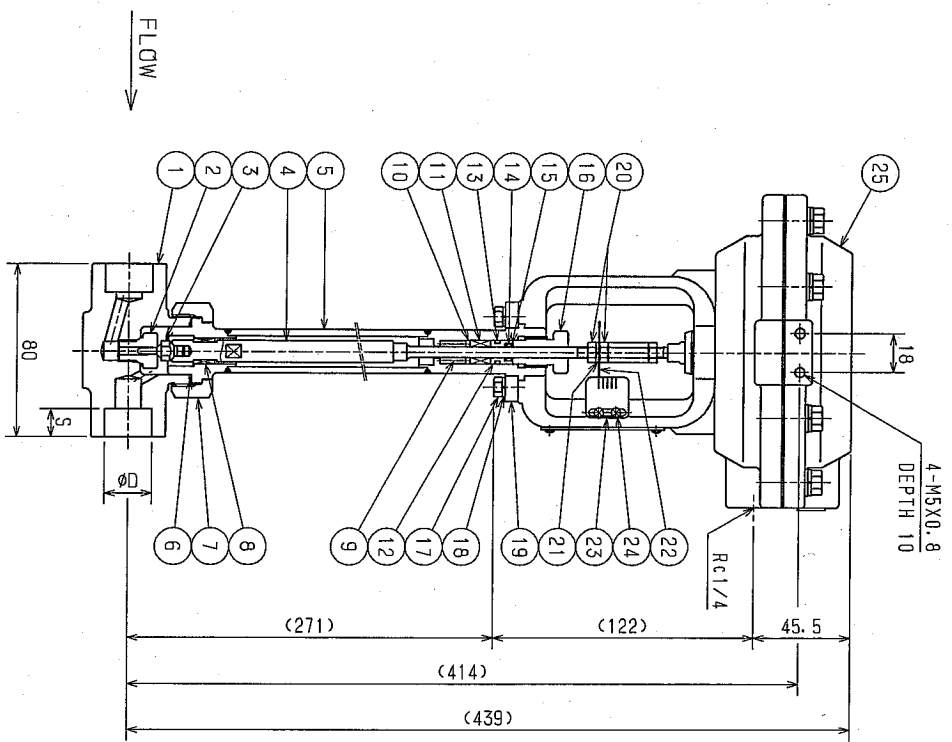
NOMINAL SIZE		D	ITEM No.	Cv VALUE
A	B			
8	1/4	1/4NPT	M3D*1-115BN-*2-CFB	0.7
10	3/8	3/8NPT	M3D*1-115CN-*2-CFB	0.7~1.0
15	1/2	1/2NPT	M3D*1-115DN-*2-CFB	UNDER 3.0
20	3/4	3/4NPT	M3D*1-115EN-*2-CFB	
25	1	1NPT	M3D*1-115FN-*2-CFB	

CAREER		CONTRAST TABLE	NOMINAL SIZE (A)	6	8	10	15	20	25	32	40	50	65	80	90	100	125	150	200	250	UNIT (mm)	THE THIRD ANGLE	010	ADM1-115	CAB. NO.	CC-08
			NOMINAL SIZE (B)	1/8	1/4	3/8	1/2	3/4	1	1 1/4	1 1/2	2	2 1/2	3	3 1/2	4	5	6	8	10			M3D-115A-F	6		
			OUTSIDE DIAMETER	10.5	13.8	17.3	21.7	27.2	34.0	42.7	48.6	60.5	76.3	89.1	101.6	114.3	139.8	165.2	216.3	267.4						

**Caution**  
The valve must be installed vertically with its actuator upside. Please consult us in advance if in your system this can not be done.

23	LIFT SCALE	SUS304	1	20	HEX. NUT	SUS304	2
24	GROSS RECESSED HEAD SCREWS	SUS304	2	21	SPRING WASHER	SUS304	1
25	ACTUATOR		1SET	22	INDICATOR	SUS304	1

# SAMPLE



**Notes on welding**  
1. Before welding to a pipe, open the valve fully to lessen the effect of heat on the valve.  
Also, after welding one side, wait at least 20 minutes before welding the other side for the same reason.  
2. The Glands can loosen under welding heat, therefore tighten them after the welded valve returns to room temperature.  
The recommended tightening torque is 2N·m.

- NOTE**
- ※1 Indicates Operating pressure number.
  - ※2 Indicates Cv value number.
  - Test pressure is specified on each occasion, because it varies according to the specifications.
  - Material marking on body is 316.

NOMINAL SIZE	ITEM No.		Cv
	A	B	
6	1/8	11.0	10
8	1/4	14.3	
10	3/8	17.8	13
15	1/2	22.2	

UNIT: mm

DATE	TEST PRESS.	TEST PRESS.
'02-11-30	LIBR	FLUID
SCALE	FREE	SHELL
APPD.	<i>[Signature]</i>	SEAT
CHKD.	<i>m. Sogawa</i>	BACKSEAT
DESIGN	<i>M. Kawada</i>	SEAL
RECIPIENT		
MODEL NO.		
TRADEMARK OR MODEL NAME	MINUCON®	
NAME	STAINLESS STEEL REVERSE OPERATION TYPE MINI CONTROL VALVES	
DRG. NO.	UM196770E	REV. MARK
		0

**MATERIAL LIST**

PART. NO.	NAME OF PARTS	MATERIAL	QTY	REMARK
1	BODY	SUSF316	1	
2	SEAT	SUS316	1	STELLITE No. 12
3	DISK	SUS316	1	
4	STEM	SUS316	1	
5	BONNET	SUS316	1	
6	GASKET	SUS316	1	
7	BONNET NUT	SUS304	1	
8	GUIDE	PFA	1	
9	SPRING	SUS304MPB	1	
10	PACKING SHEET	PTFE	1SET	
11	GLAND PACKING	SUS316	1	
12	O RING HOLDER	SUS316	1	
13	O RING	FPM	1	
14	O RING	FPM	1	
15	BACK UP RING	PTFE	1	
16	GLAND NUT	SUS304	4	
17	HEX. BOLT	SUS304	4	
18	SPRING WASHER	SUS304	4	
19	ACTUATOR PLATE	SUS304	2	

REV. NO.	DATE	REVISED DESCRIPTION	REVISED	APPD.

**REVISION**

REV. NO.	DATE	REVISED DESCRIPTION	REVISED	APPD.