

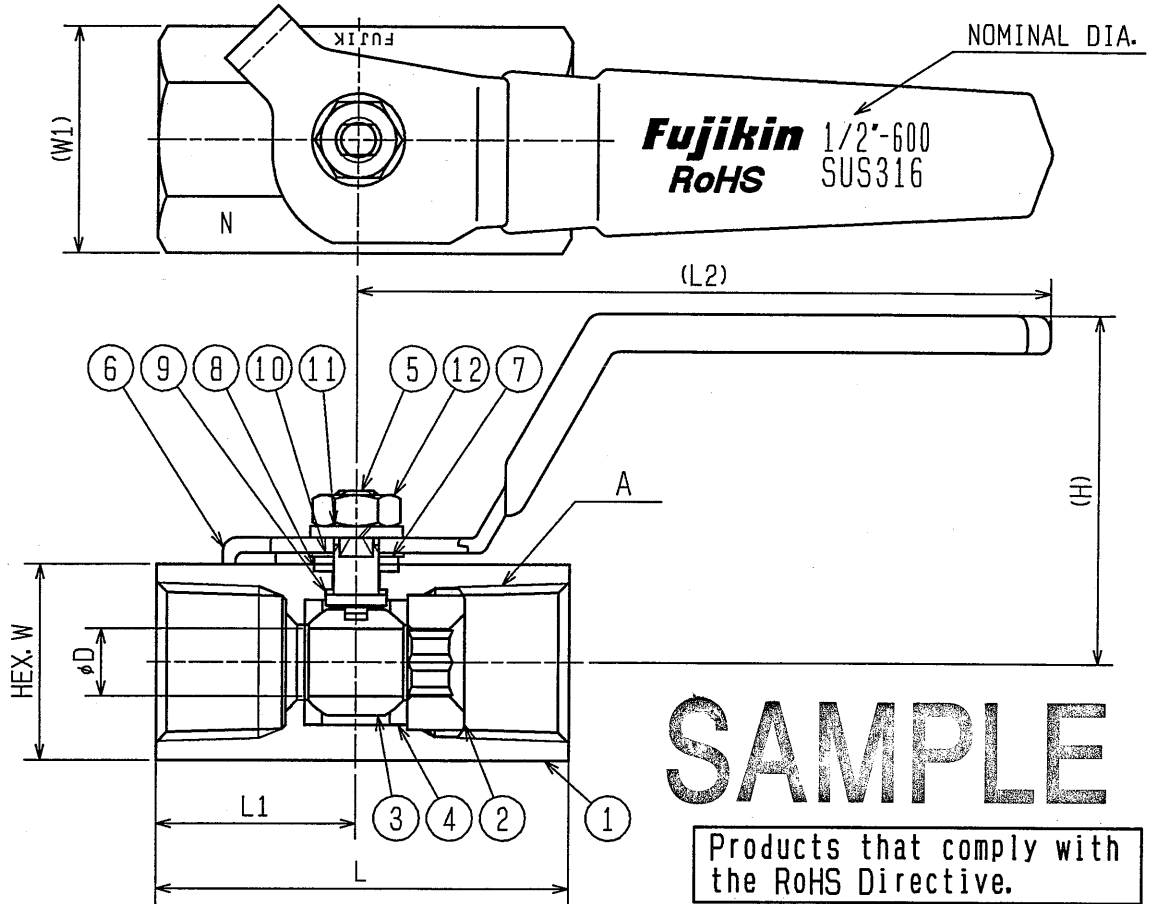
RECIPIENT

UNIT (mm)

THE THIRD ANGLE



REMARK



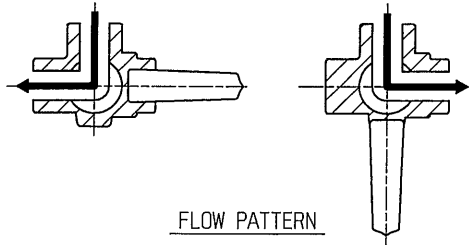
Products that comply with the RoHS Directive.

NOMINAL DIA.	A	D	L	L1	L2	H	W	W1	Cv VALUE	MASS (Kg)	ITEM No.
1/4 <sup>B</sup>	1/4NPT	5	40	19	60	31	17	19.5	1.4	0.1	UBV-14BN-R
3/8 <sup>B</sup>	3/8NPT	7.5	44.5	21.7	60	34	21	24	3.5	0.15	UBV-14CN-R
1/2 <sup>B</sup>	1/2NPT	9	54.5	26.5	90	46	26	30	5.0	0.2	UBV-14DN-R
3/4 <sup>B</sup>	3/4NPT	12.5	61	30	90	49	32	37	10.1	0.35	UBV-14EN-R
1 <sup>B</sup>	1NPT	16	75	36.5	90	52	38	44	17.5	0.5	UBV-14FN-R

REV. NO.	DATE	REVISED DESCRIPTION	REVISED	APPD.	ITEM	NAME OF PARTS	MATERIAL	Q' TY	REMARK																													
△	10.20.'10	Revision		<i>M. Sawada</i>	14																																	
					13																																	
					12	HEX NUT	SUS 304	1																														
					11	SPRING WASHER	SUS 304	1																														
					10	CONICAL SPRING WASHER	SUS 304	1																														
					9	GLAND PACKING	G-PTFE	1																														
					8	GLAND PACKING	G-PTFE	1																														
					7	GLAND WASHER	SUS 304	1																														
					6	HANDLE	SUS 430	1	VINYL COATING (DARK BLUE)																													
					5	STEM	SUS 316	1																														
					4	SEAT RING	G-PTFE	2																														
					3	BALL	SUS 316	1																														
					2	RETAINER	SUS 316	1																														
					1	BODY	SUS 316	1																														
<p>REVISION</p> <table border="1"> <thead> <tr> <th>DATE</th> <th>TEST PRESS. (MPa)</th> <th>FLUID</th> <th>HYDRO</th> <th>AIR</th> </tr> </thead> <tbody> <tr> <td>9.5.'08</td> <td></td> <td>SHELL</td> <td>5.88</td> <td></td> </tr> <tr> <td></td> <td></td> <td>SEAT</td> <td></td> <td>4.32</td> </tr> <tr> <td></td> <td></td> <td>BACKSEAT</td> <td></td> <td></td> </tr> <tr> <td></td> <td></td> <td>SEAL</td> <td></td> <td>4.32</td> </tr> </tbody> </table>					DATE	TEST PRESS. (MPa)	FLUID	HYDRO	AIR	9.5.'08		SHELL	5.88				SEAT		4.32			BACKSEAT					SEAL		4.32	<p>MATERIAL LIST</p> <table border="1"> <thead> <tr> <th>DRG. NO.</th> <th>REV. MARK</th> </tr> </thead> <tbody> <tr> <td>U24298ER</td> <td>1</td> </tr> </tbody> </table>					DRG. NO.	REV. MARK	U24298ER	1
DATE	TEST PRESS. (MPa)	FLUID	HYDRO	AIR																																		
9.5.'08		SHELL	5.88																																			
		SEAT		4.32																																		
		BACKSEAT																																				
		SEAL		4.32																																		
DRG. NO.	REV. MARK																																					
U24298ER	1																																					
<p>STAINLESS STEEL 3.92MPa SCREWD TYPE BALL VALVES</p> <p>Fujikin Incorporated 株式会社 フジキン</p>					<p>060 UBV UBV-14-2 1 CAB. NO.</p>																																	



# SAMPLE

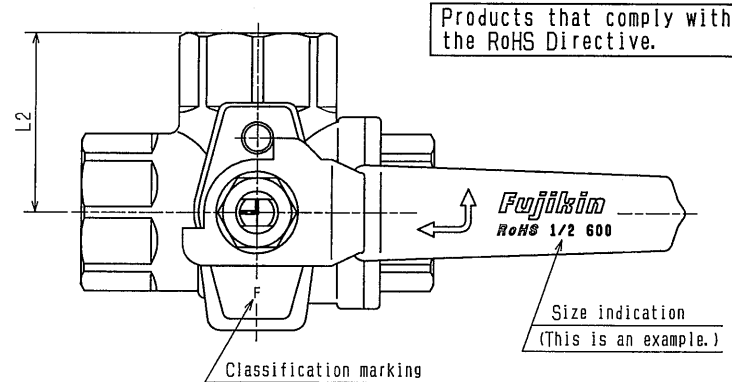
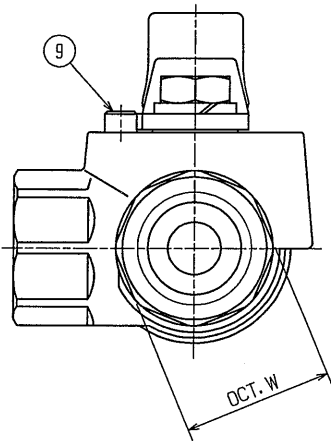


FLOW PATTERN

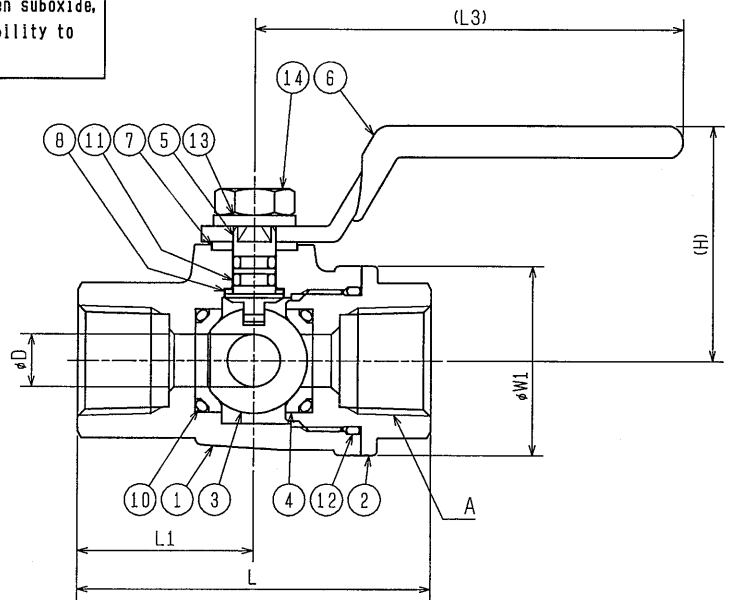
When using the valve in the direction reverse to the above flow pattern, working pressure must be not more than 1.96MPa and the temperature within -10 and 80C.

**Note on Selecting a Valve**

Since a fluororubber O-ring is used at the gland, the valve is not suited for use with corrosive or swelling fluids (ammonia, chlorofluorocarbon, acetic acid, nitrogen suboxide, ethylene oxide and acetone, etc.). If unsure of sealing material's conformability to fluids, contact Fujikin before selecting this valve.



Products that comply with the RoHS Directive.



NOMINAL SIZE	A	D	L	L1	L2	L3	H	W	W1	Cv VALUE	MASS (ABOUT) Kg	ITEM No.
1/4B	Rc1/4	7	56	27	27	60	39	21	30	1.8	0.3	UBVH-14B-R
3/8B	Rc3/8	7	56	27	27	60	39	21	30	1.8	0.3	UBVH-14C-R
1/2B	Rc1/2	10	66	33	34	80	45	28	36	3.6	0.45	UBVH-14D-R

REVISION				
REV. NO.	DATE	REVISED DESCRIPTION	REVISED	APPD.

REMARK 1. The material of the body is indicated as SUS316.  
 2. Do not use this valve when the fluid is oxygen because silicon oil is applied to the part contacting fluid as lubricant.  
 3. Valve opening/closing operation must be within six times per minute.

PART. NO.	NAME OF PARTS	MATERIAL	Q'TY	REMARK
15				
14	HEX. NUT	SUS304	1	
13	SPRING WASHER	SUS304	1	
12	O RING	FKM	1	
11	O RING	FKM	2	
10	O RING	FKM	2	
9	STOPPER PIN	SUS304	1	
8	GLAND PACKING	G-PTFE	1	
7	GLAND PACKING	G-PTFE	1	
6	HANDLE	SUS430	1	VINYL COATING BLUE
5	STEM	SUS316	1	
4	SEAT	C-PTFE	2	
3	BALL	SUS316	1	
2	REGULATION SCREW	SUSF316	1	
1	BODY	SUSF316	1	

MATERIAL LIST					
DATE	12. 15. '11	TEST PRESS. MPa			
SCALE	FREE <th>ITEM</th> <th>FLUID</th> <th>HYDRO</th> <th>AIR</th>	ITEM	FLUID	HYDRO	AIR
APPD.	N. Maeda	SHELL		6. 17	
CHKD.	H. Nawa	SEAT			4. 53
DESIGN	M. Sawada	BACKSEAT			
		SEAL			4. 53

RECIPIENT  
 MODEL NO.  
 TRADEMARK OR MODEL NAME  
 NAME STAINLESS STEEL 4.11MPa SCREWED TYPE 3 WAY BALL VALVES  
 DRG. NO. U241038E REV. MARK 0  
**Fujikin Incorporated**  
**株式会社 フジキン**

CAREER	CONTRAST TABLE																	
	NOMINAL SIZE (A)	6	8	10	15	20	25	32	40	50	65	80	90	100	125	150	200	250
	NOMINAL SIZE (B)	1/8	1/4	3/8	1/2	3/4	1	1 1/4	1 1/2	2	2 1/2	3	3 1/2	4	5	6	8	10
	OUTSIDE DIAMETER	10. 5	13. 8	17. 3	21. 7	27. 2	34. 0	42. 7	48. 6	60. 5	76. 3	89. 1	101. 6	111. 4	133. 8	165. 2	216. 3	267. 4