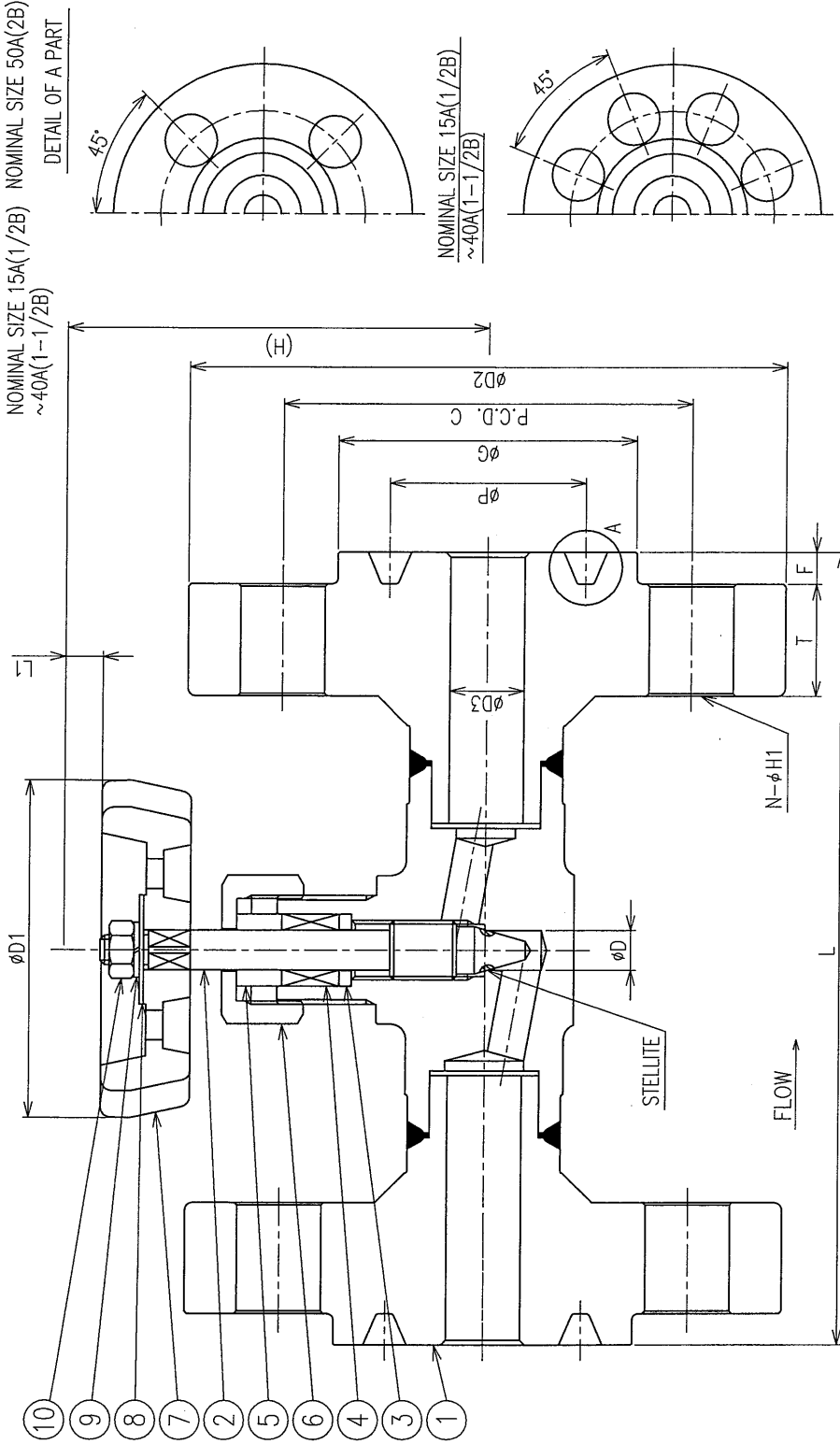


When ready to select a valve

A fluorine lubricant is used on valve surfaces that come in contact with liquid or gas media. Therefore, the valve is not suited for use with fluids such as solvents that might dissolve the lubricant. If unsure of medium reactions, contact Fujikin before selecting this valve.



NOMINAL SIZE 50A(2B)

| NOMINAL SIZE | FLANGE | | | | | | | | | | ORIFICE | HEIGHT | LIFT | D1 | Cv VALUE (ABOUT) (MAX.) | ITEM No. | |
|--------------|--------|----|-----|-------|------|-------|-------|-------|------|----|---------|--------|------|-----|-------------------------|----------|----------------|
| | A | B | D3 | L | D2 | T | C | P | G | H1 | | | | | | | N |
| 15 | 1/2 | 15 | 160 | 120.7 | 22.4 | 82.6 | 39.68 | 60.5 | 22.5 | 4 | 6.35 | 8 | 85 | 7.5 | 68 | 2.2 | US-226D-A15J-D |
| 20 | 3/4 | 20 | 180 | 130.1 | 25.4 | 88.9 | 44.45 | 66.6 | 22.5 | 4 | 6.35 | 10 | 107 | 10 | 78 | 3.0 | US-226E-A15J-E |
| 25 | 1 | 25 | 205 | 149.4 | 28.5 | 101.6 | 50.8 | 71.4 | 25.5 | 4 | 6.35 | 12 | 130 | 12 | 88 | 4.9 | US-226F-A15J-F |
| 32 | 1-1/4 | 25 | 205 | 158.8 | 28.5 | 111.3 | 60.33 | 81.1 | 25.5 | 4 | 6.35 | 12 | 130 | 12 | 88 | 5.9 | US-226F-A15J-G |
| 40 | 1-1/2 | 25 | 232 | 177.8 | 31.8 | 124.0 | 68.28 | 92.0 | 28.5 | 4 | 6.35 | 12 | 130 | 12 | 88 | 6.4 | US-226F-A15J-H |
| 50 | 2 | 25 | 291 | 215.9 | 38.1 | 165.1 | 95.25 | 124.0 | 25.5 | 8 | 7.93 | 12 | 130 | 12 | 88 | 2.64 | US-226F-A15J-I |

| NOMINAL SIZE (A) | 6 | 8 | 10 | 15 | 20 | 25 | 32 | 40 | 50 | 65 | 80 | 90 | 100 | 125 | 150 | 200 | 250 |
|------------------|------|------|------|------|------|------|-------|-------|------|-------|------|-------|-------|-------|-------|-------|-------|
| NOMINAL SIZE (B) | 1/8 | 1/4 | 3/8 | 1/2 | 3/4 | 1 | 1 1/4 | 1 1/2 | 2 | 2 1/2 | 3 | 3 1/2 | 4 | 5 | 6 | 8 | 10 |
| OUTSIDE DIAMETER | 10.5 | 13.8 | 17.3 | 21.7 | 27.2 | 34.0 | 42.7 | 48.6 | 60.5 | 76.3 | 89.1 | 101.6 | 114.3 | 139.8 | 165.2 | 216.3 | 267.4 |

CONTRAST TABLE

CAREER

| REV. NO. | DATE | REVISED DESCRIPTION | REVISED APPD. |
|----------|----------|---------------------|------------------|
| △ | 09.25.12 | Rev. | <i>M. Kawada</i> |

REMARK 1. MATERIAL MARKING ON BODY IS 316.
2. MATERIAL OF FLANGE PART IS SUS316
ON NOMINAL SIZE 32A(1-1/4B) AND OVER.

| PART NO. | NAME OF PARTS | MATERIAL | QTY | REMARK |
|----------|--------------------|----------|------|---------------|
| 15 | | | | |
| 14 | | | | |
| 13 | | | | |
| 12 | | | | |
| 11 | | | | |
| 10 | HEX. NUT | SUS304 | 1 | EQUIVALENT |
| 9 | WASHER | SUS304 | 1 | EQUIVALENT |
| 8 | NAME PLATE | A5052P | 1 | |
| 7 | HANDLE | ADC12 | 1 | METALLIC BLUE |
| 6 | PACKING GLAND NUT | SUS316 | 1 | |
| 5 | PACKING GLAND BUSH | SUS316 | 1 | |
| 4 | GLAND PACKING | PITE+PFA | 1SET | |
| 3 | BUSH | SUS316 | 1 | |
| 2 | STEM | SUS316 | 1 | STELLITE |
| 1 | BODY | SUSF316 | 1 | |

MATERIAL LIST

| DATE | 10. 16. '92 | TEST PRESS. | M.P.a |
|-----------|------------------|-------------|-------|
| SCALE | FREE | HYDRO | AIR |
| APPD. | <i>M. Kawada</i> | SHELL | 37.3 |
| CHKD. | <i>M. Kawada</i> | SEAT | 27.3 |
| DESIGN | <i>M. Kawada</i> | BACKSEAT | |
| RECIPIENT | | SEAL | 27.3 |

| MODEL NO. | TRADEMARK OR MODEL NAME | NAME | DRFG NO. | REV. MARK |
|-----------|-------------------------|------------------------------|----------|-----------|
| | | STAINLESS STEEL ANSI 1500 | | |
| | | RJ FLANGE TYPE NEEDLE VALVES | | |
| | | | U142546E | 1 |

Fujikin Incorporated
株式会社 フジキン

| ccag050 | US-226 | GAB. NO. | 28-4A |
|---------|--------|----------|-------|
|---------|--------|----------|-------|

SPECIFICATIONS

| | | |
|--------|--------------------|---|
| No. | D61-120925-02 | △ |
| DATE | 09. 25. '12 | |
| APPD. | <i>J. N. L. L.</i> | |
| CHKD. | <i>J. N. L. L.</i> | |
| DESIGN | <i>M. Sawada</i> | |

| | | | | | | | |
|----|---|--|--|-------------|-----------------|-----------------|-------------|
| 1 | PRODUCT NAME | STAINLESS STEEL ANSI 1500 RJ FLANGE TYPE NEEDLE VALVES | | | | | |
| 2 | ITEM No.(example) | US-226D-A15J-D | | | | | |
| 3 | DRG.No. | U142546E | | | | | |
| 4 | PRESSURE CLASS | 24. 8MPa | | | | | |
| 5 | DESIGN PRESSURE | 24. 8MPa | | | | | |
| 6 | TEMPERATURE RANGE | -20~+150°C | | | | | |
| 7 | MATERIAL OF CONTACTED SURFACES WITH FLUID | BODY | SUSF316 | | | | |
| | | STEM | SUS316(STELLITE) | | | | |
| | | GLAND PACKING | PTFE+PFA | | | | |
| 8 | TEST AND LEAKAGE | ① PRESSURE TEST (APPLICATION OF PRESSURE) [DEFAULT] | FLUID:WATER PRESSURE:37.3MPaG KEEP THEIR SHAPE BETTER BY VISUAL CHECK | | | | |
| | | ② TIGHTNESS LEAK TEST (APPLICATION OF PRESSURE) [DEFAULT] | FLUID:AIR PRESSURE:27.3MPaG LEAKPROOF BY VISUAL CHECK | | | | |
| | | ③ SEAT LEAK TEST (APPLICATION OF PRESSURE) [DEFAULT] | FLUID:AIR PRESSURE:27.3MPaG LEAKPROOF BY VISUAL CHECK | | | | |
| 9 | NOMINAL DIA | 15A (1/2B) | 20A (3/4B) | 25A (1B) | 32A (1-1/4B) | 40A (1-1/2B) | 50A (2B) |
| 10 | MAX Cv VALUE (CALCULATED VALUE) | 1. 08 | 1. 83 | 2. 64 | 2. 64 | 2. 64 | 2. 64 |
| 11 | CONNECTION METHOD | RJ FLANGE TYPE | | | | | |
| 12 | GREASE TYPE | A FLUORINE LUBRICANT IS USED ON CONTACTED SURFACES WITH FLUIDS. | | | | | |
| 13 | REMARKS | _____ | | | | | |

| | | | | | |
|----------|------|----------|-------|-------|--|
| △ | | | | | |
| △ | | | | | |
| MARK | DATE | CONTENTS | REVD. | APPD. | |
| REVISION | | | | | |